



National Academy of RUDSETI

Sponsors: SDME Trust, Syndicate Bank & Canara Bank

Bengaluru

POLY HOUSE & SHADE NET FARMING

(Course Code 30051)

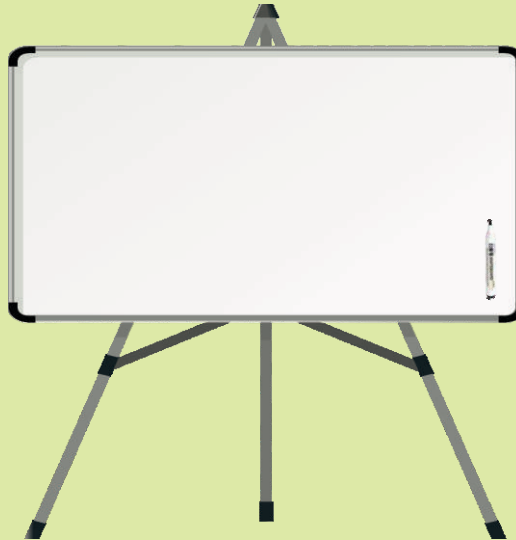
TRAINING AIDS & EQUIPMENTS



POLY HOUSE & SHADE NET FARMING (COURSE CODE 30051)

A. GENERIC

1 White Board & White Board Markers



2 LCD Projector



3 Computer / Laptop



4 Printer



5 Scanner



6 Broadband Connectivity



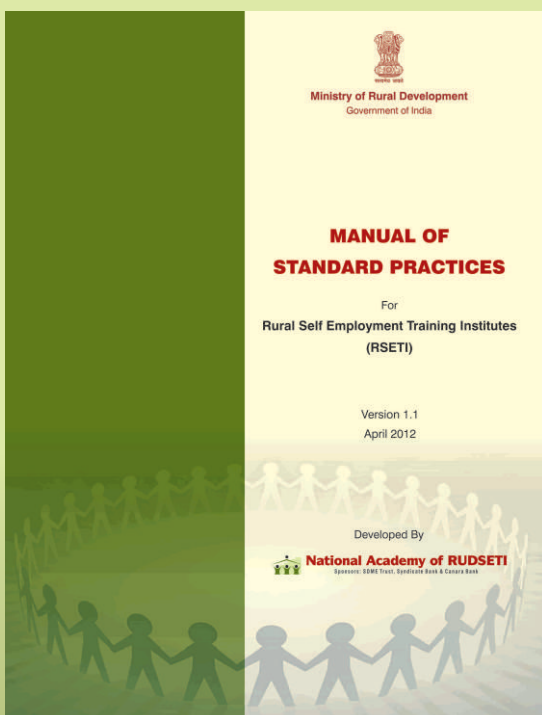
7 Collar / Hand Mike & Class room speakers



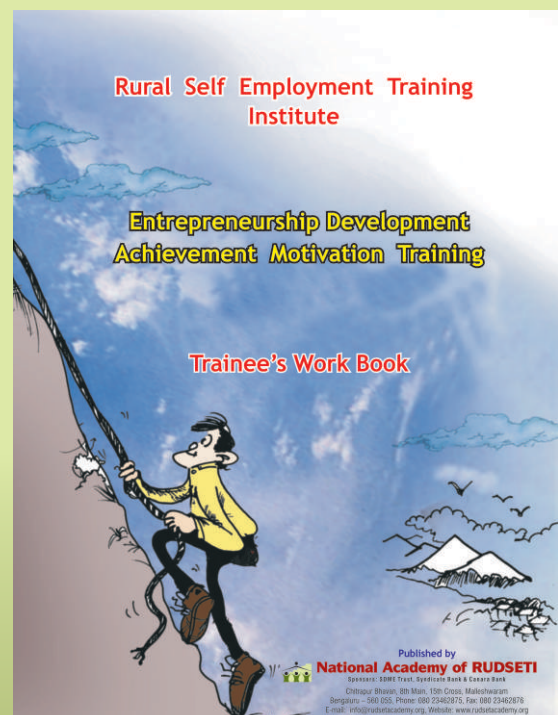
8 Chart Papers & Markers



9 Manual of Standard Practices for RSETI



10 Achievement Motivation Training Work Book



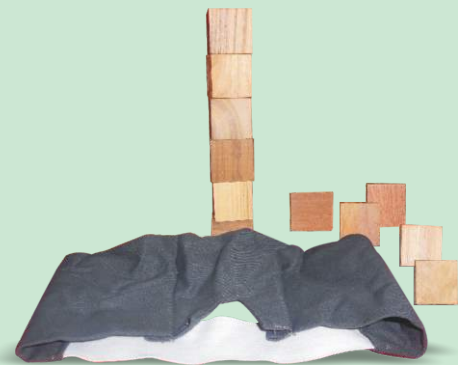
B. PROGRAMME SPECIFIC:

1. Video clips for Achievement Motivation Training
2. Video clips for internalization of entrepreneurial competencies
3. Case Studies for identification of Entrepreneurial competencies
4. A poster / chart with competencies & description prominently written



5. Training aid for Tower building exercise:

- i. About 25 wooden blocks (cube shaped) with plain surface of 5 Sq. inch each,
- ii. Clean hand kerchief/cloth (black colour) for blind folding, observation sheets, paper slips



6. Demonstrative chart on Deposits, advances & other banking services
7. Video clip on Protected cultivation using poly house – Green house, Shade net house, Low tunnels
8. Video clip on Water Management systems in poly house & Shade net farming
9. Video clip on fertigation
10. Demonstrative chart on common pests & diseases
11. Video clip on harvesting of crops grown under protected conditions
12. Video clips on marketing of horticultural crops
13. Model Project Report on Poly house and shade net farming