



National Academy of RUDSETI

Sponsors: SDME Trust, Syndicate Bank & Canara Bank

Bengaluru

PLUMBING & SANITARY WORKS

(Course Code 40040)

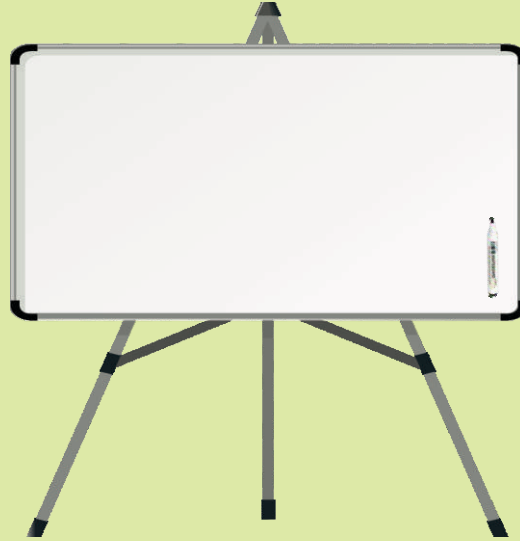
TRAINING AIDS & EQUIPMENTS



PLUMBING & SANITARY WORKS (COURSE CODE 40040)

A. GENERIC

1 White Board & White Board Markers



2 LCD Projector



3 Computer / Laptop



4 Printer



5 Scanner



6 Broadband Connectivity



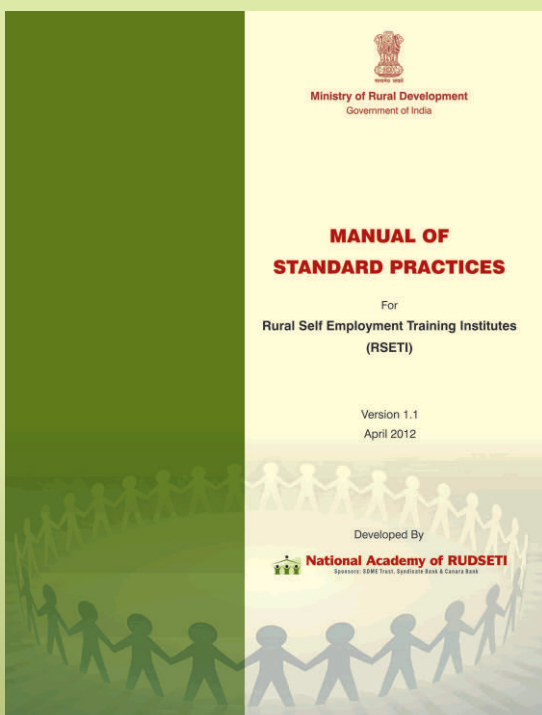
7 Collar / Hand Mike & Class room speakers



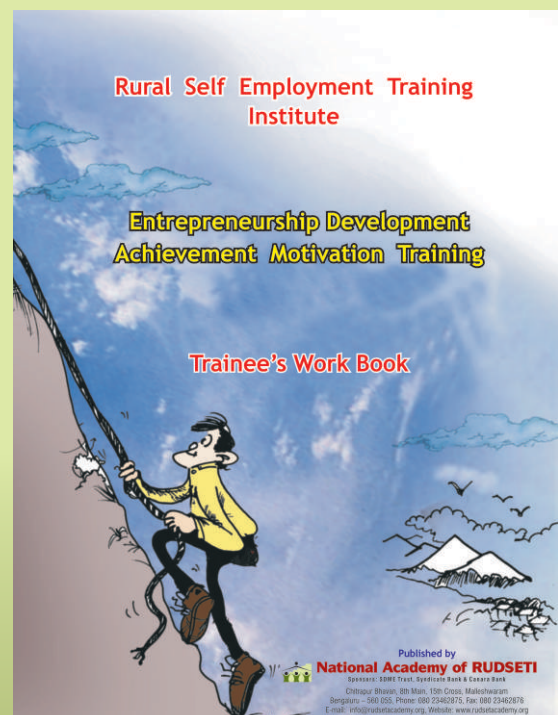
8 Chart Papers & Markers



9 Manual of Standard Practices for RSETI



10 Achievement Motivation Training Work Book



B. PROGRAMME SPECIFIC:

1. Video clips for Achievement Motivation Training
2. Video clips for internalization of entrepreneurial competencies
3. Case Studies for identification of Entrepreneurial competencies
4. A poster / chart with competencies & description prominently written



5. Training aid for Boat Game:

- i. Glossy colour paper (one side only colored) of 10cmX10 cm dimension
- ii. About 20 such 10cm square paper for each candidate
- iii. instruction sheet & data record sheet for each candidate



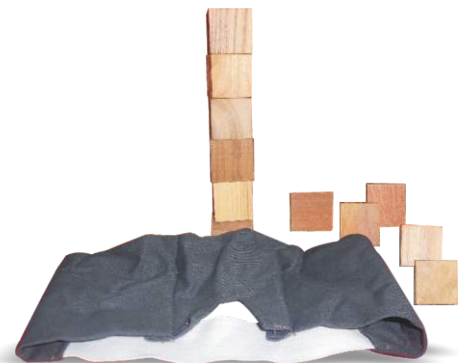
6. Training aids for ring toss exercise :

- i. 4 light weight rings of about 8” diameter,
- ii. A wooden peg with stand of about 18” height
- iii. Distance markers, scoring & recording sheet



7. Training aid for Tower building exercise:

- i. About 25 wooden blocks (cube shaped)with plain surface of 5 Sq. inch each,
- ii. Clean hand kerchief/cloth (black colour) for blind folding, observation sheets, paper slips



8. Demonstrative chart for Deposits, advances & other banking services
9. Model Project Report for Plumbing and Sanitary Works Drilling Machine

Sl No.

Particulars

Suggested Pictorial Depiction

10. Circular pipe cutting machine



11. Power saw



12. Grinding machine



13. Driller (portable type)



14. Power threading machine

15. Guillotine shearing machine

16. Bench shears

17. Set of acetylene welding equipment

18. Standing vice

19. Bench Vice

20. Pipe vice

21. Electric Arc welding machine

22. Plunger

23. Wooden mallet

24. Wire brush

25. Snips

26. Gas pliers

27. Dividers

28. Marking knife

29. Centre punch

30. Heat treatment furnace

31. Screw drivers (large and small)

32. Shave – hooks

33. Safety tool kits



SI No.

Particulars

Suggested Pictorial Depiction

34. Blacksmith tools

Anvil	Hammers	Chisels	Fuller
Shape block	Pinches	Drifts	Tongues differential type

35. Samples of commodes and wash basins (2 each)

36. Consumables like Cement, sand, adhesives, pipes, bends etc in sufficient quantities in consultation with Domain trainers

